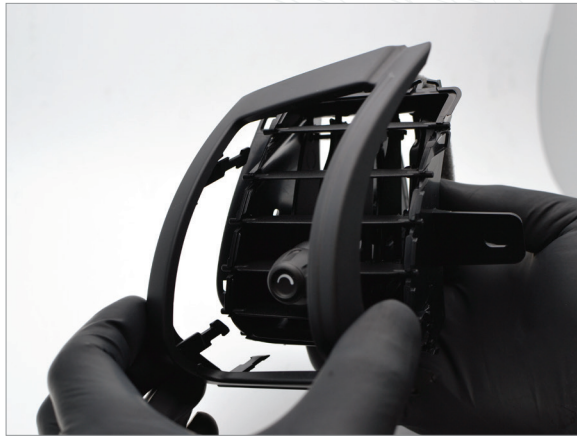


Vent Install Guide for Mini F56



1 Release the 8 tabs holding the trim to the front of the housing and remove the trim.



2 Remove the top 2 horizontal slats from the housing. NOTE: be sure to leave the linkage connected to the lower 4 horizontal slats.



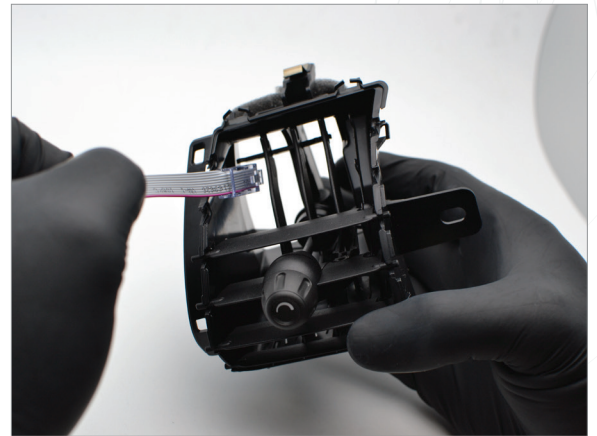
3 Release the bottom of the left-most vertical slat and push it toward the rear of the housing.



4 Disconnect the left-most vertical slat from the linkage. NOTE: be sure to leave the linkage connected to the other 3 vertical slats.



5 Remove the left most vertical slat from the rear of the housing.



6 Feed the display cable through the opening on the left side of the vent as shown.

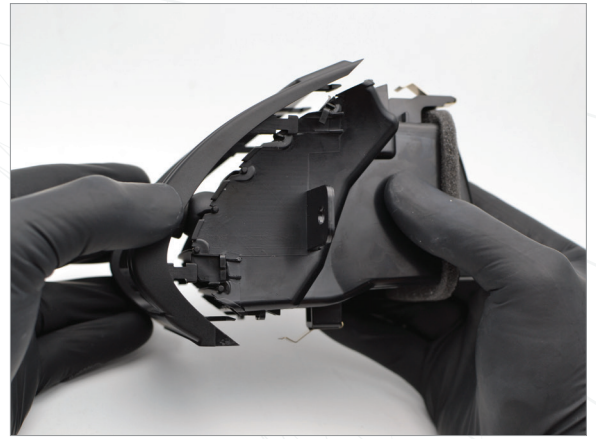
WARRANTY & LIABILITY:

Neither P3 Cars, nor its dealers or agents shall be liable in any way, for any damage, loss, injury or other claims, resulting from the installation or use of this product. By purchasing or installing this product, you assume all liability of any kind connected with the use and/or application of this product. If you are unsure that you can safely install and use this product, consult a qualified installer or mechanic. The warranty on this product covers only the product itself for a period of 6 months from the date of purchase, and it will be at our discretion to repair or replace the affected parts. No user serviceable parts inside. Warranty will be voided if product shows physical damage.

Please download the latest copy of this document from www.p3cars.com/install



7 Position your display so that the bracket lines up with the slots where the top two slats originally were. Be sure that bracket is fully seated back into slots.



8 Line up the 8 tabs on the trim with the housing and fully seat the trim onto the housing.



WARRANTY & LIABILITY: Neither P3 Cars, nor its dealers or agents shall be liable in any way, for any damage, loss, injury or other claims, resulting from the installation or use of this product. By purchasing or installing this product, you assume all liability of any kind connected with the use and/or application of this product. If you are unsure that you can safely install and use this product, consult a qualified installer or mechanic. The warranty on this product covers only the product itself for a period of 6 months from the date of purchase, and it will be at our discretion to repair or replace the affected parts. No user serviceable parts inside. Warranty will be voided if product shows physical damage.